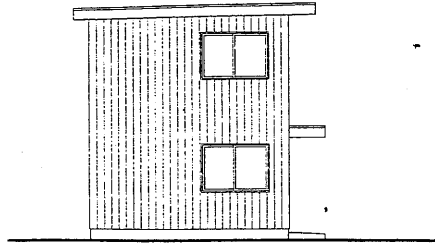
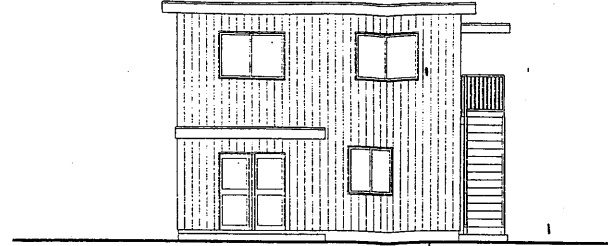


# 事務所棟



5.120

西立面図 (1/100)



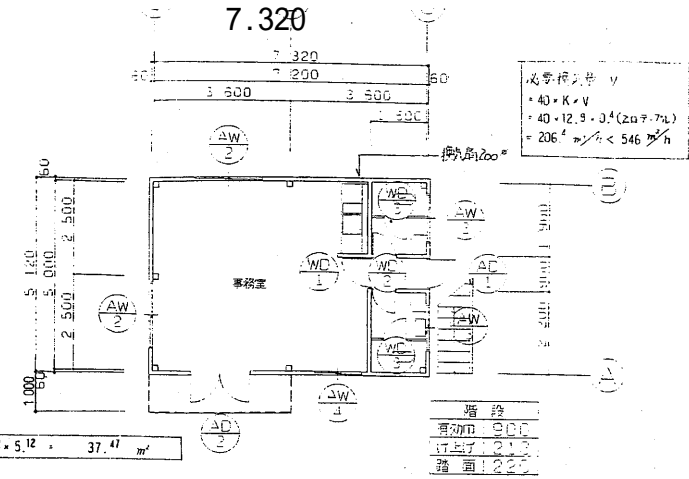
7.320

南立面図 (1/100)

## 平面図 1階

5.120

1階床面積  $7.32 \times 5.12 = 37.47 \text{ m}^2$



| 休憩室 |   |   |
|-----|---|---|
| 床面積 | $7.32 \times 5.12 = 37.47 \text{ m}^2$                | $\frac{1}{20} = 1.873$ $\frac{1}{50} = 0.749$ |
| 換気  | $1.70 \times 1.20 \times \frac{1}{2} \times 5 = 5.10$ | $> 1.87$                                      |
| 排煙  | $1.70 \times 0.40 \times \frac{1}{2} \times 5 = 1.70$ | $> 0.74$                                      |

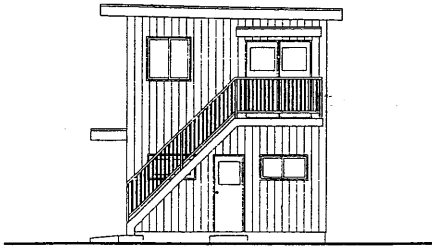
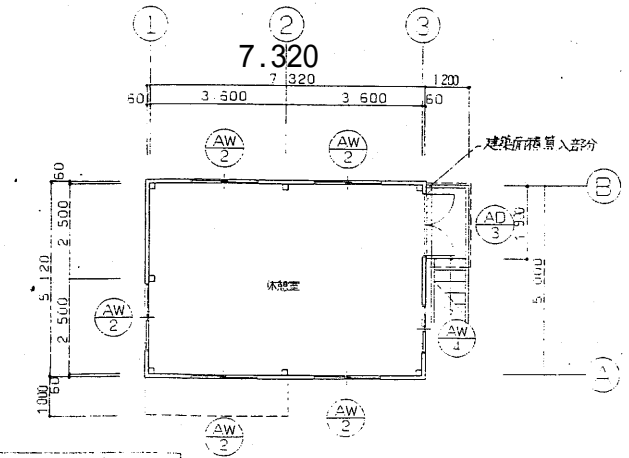
| 事務室 |   |  |
|-----|---|--|
| 床面積 | $5.76 \times 5.12 = 29.49 \text{ m}^2$  | $\frac{1}{20} = 1.44$ $\frac{1}{50} = 0.589$ |
| 換気  | $1.70 \times 1.20 \times \frac{1}{2} \times 2 + 1.20 \times 1.20 \times \frac{1}{2} = 2.76$ | $> 1.47$                                     |
| 排煙  | $1.70 \times 0.40 \times \frac{1}{2} \times 2 + 1.20 \times 0.40 \times \frac{1}{2} = 0.92$ | $> 0.58$                                     |

|      |  |
|------|--|
| 建築面積 | $7.32 \times 5.12 + 0.20 \times 1.9 = 37.85 \text{ m}^2$ |
| 延床面積 | $37.47 + 37.47 = 74.94 \text{ m}^2$                      |

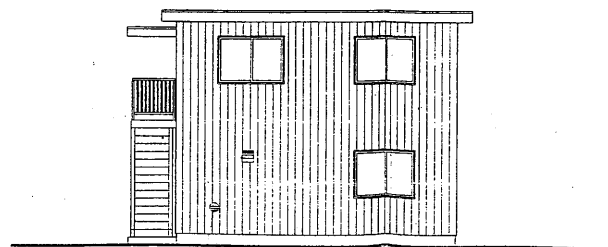
## 平面図 2階

5.120

2階床面積  $7.32 \times 5.12 = 37.47 \text{ m}^2$



東立面図 (1/100)



北立面図 (1/100)