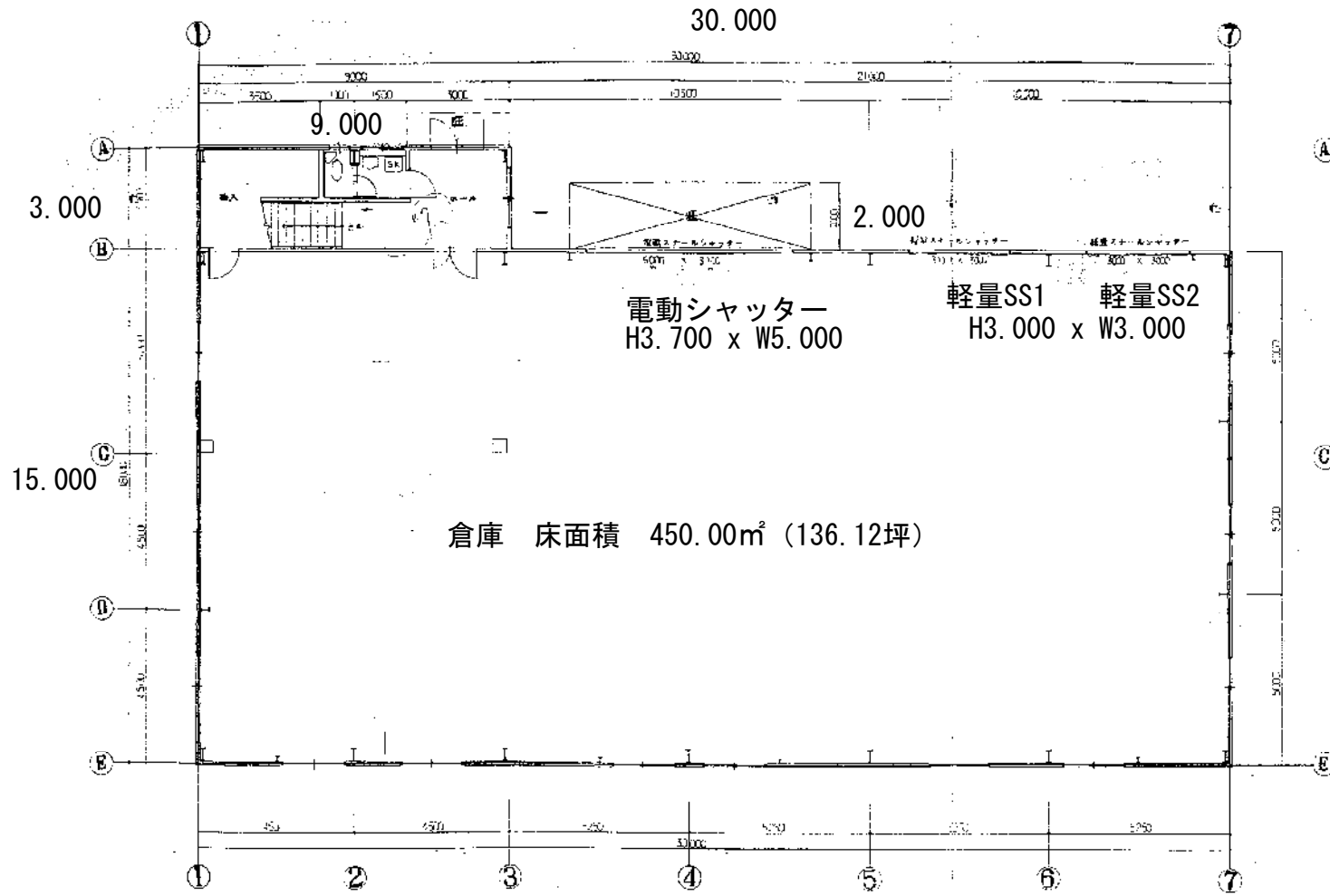
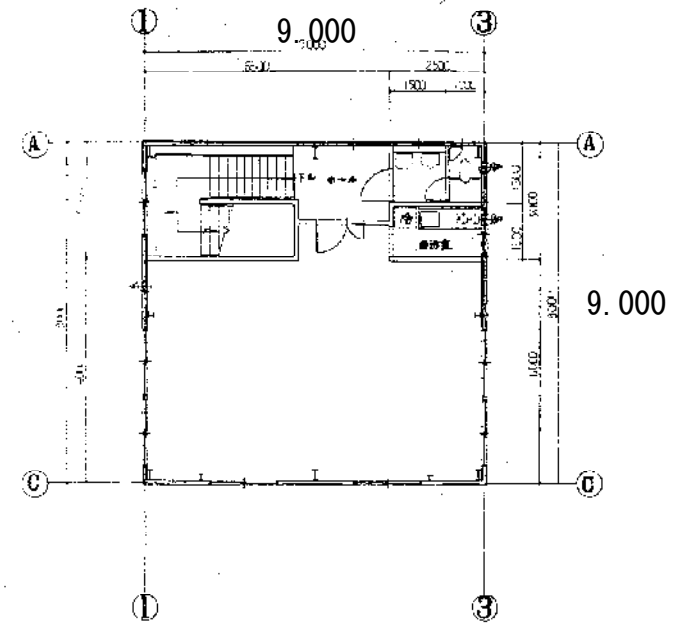


平面図

1階倉庫部分



2階事務所



床元計算

事務所

$$[(9.0 \times 9.0) + (2.5 \times 9.0)] \times \frac{1}{100} = 2.92$$

$$1.2^2 \times \frac{1}{100} = 0.14$$

$$2.92 + 0.14 = 3.06$$

仕屋計算

事務所

$$[(9.0 \times 9.0) + (2.5 \times 9.0)] \times \frac{1}{100} = 2.92$$

$$1.2^2 \times \frac{1}{100} = 0.14$$

$$2.92 + 0.14 = 3.06$$