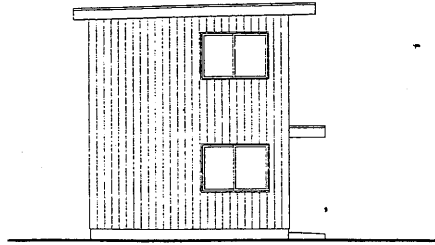
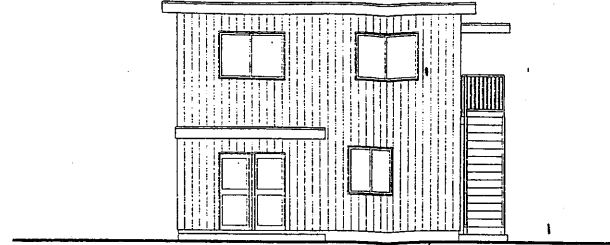


# 事務所棟



5.120

西立面図 (1/100)



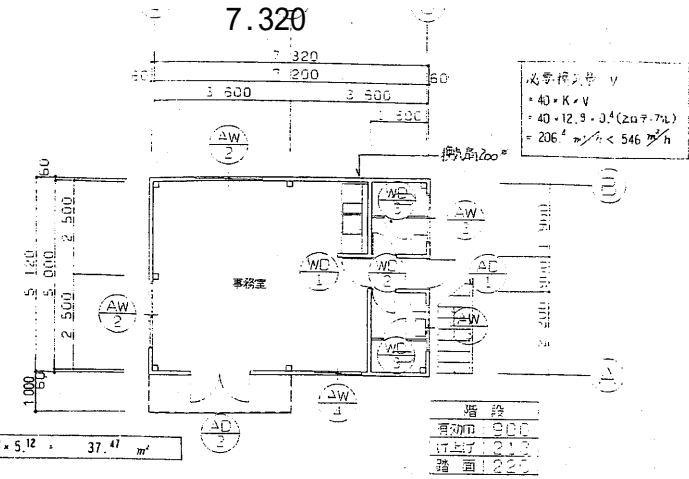
7.320

南立面図 (1/100)

## 平面図 1階

5.120

1階床面積 7.32 × 5.12 = 37.47 m<sup>2</sup>



事務所棟 1階平面図 (1/100)

休憩室	
床面積	$7.32 \times 5.12 = 37.47 \text{ m}^2$
換気	$1.70 \times 1.20 \times \frac{1}{2} \times 5 = 5.10 > 1.87$
採照	$1.70 \times 0.40 \times \frac{1}{2} \times 5 = 1.70 > 0.74$

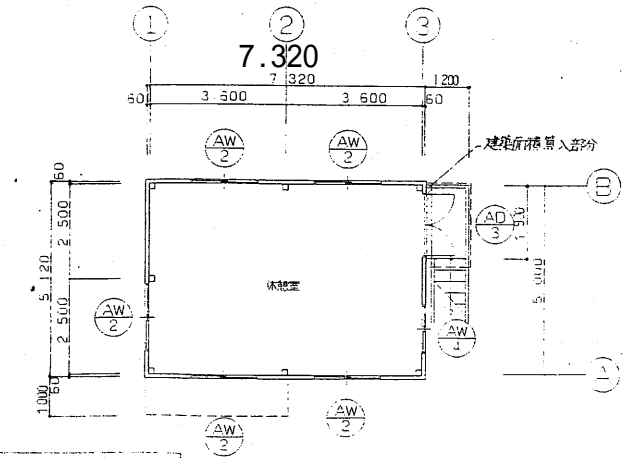
事務室	
床面積	$5.76 \times 5.12 = 29.49 \text{ m}^2$
換気	$1.70 \times 1.20 \times \frac{1}{2} \times 2 + 1.20 \times 1.20 \times \frac{1}{2} = 2.76 > 1.47$
採照	$1.70 \times 0.40 \times \frac{1}{2} \times 2 + 1.20 \times 0.40 \times \frac{1}{2} = 0.92 > 0.58$

建築面積	$7.32 \times 5.12 + 0.20 \times 1.9 = 37.85 \text{ m}^2$
延床面積	$37.47 + 37.47 = 74.94 \text{ m}^2$

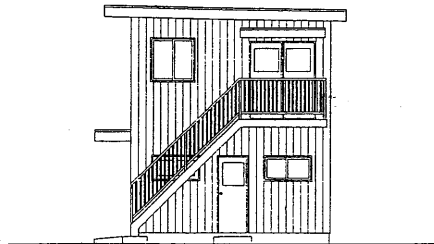
## 平面図 2階

5.120

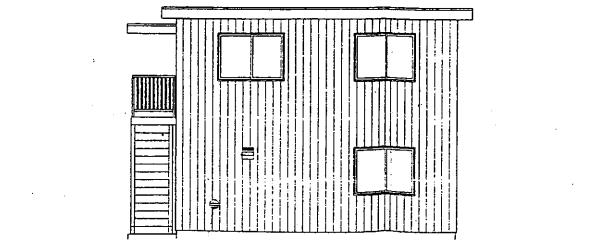
2階床面積 7.32 × 5.12 = 37.47 m<sup>2</sup>



事務所棟 2階平面図 (1/100)



東立面図 (1/100)



北立面図 (1/100)